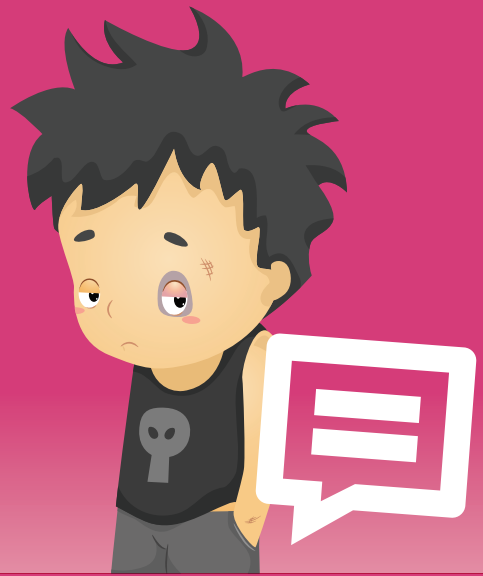


# SAFEGUARDING DOMESTIC VIOLENCE



## *What is domestic violence?*

Domestic violence is the abuse of one partner within an intimate or family relationship. It is the repeated, random and habitual use of intimidation to control. The abuse can be physical, emotional, psychological, financial or sexual.

Witnessing domestic abuse is child abuse.

Teenagers can suffer domestic abuse in their peer relationships.

## *How to get help*

Speak to any member of staff or email your concerns to the college's Safeguarding Team at [safeguarding@grimsby.ac.uk](mailto:safeguarding@grimsby.ac.uk)

## *Other support*

[gclass.org.uk](http://gclass.org.uk) - 0845 602 9035

[nspcc.org.uk](http://nspcc.org.uk) - 0808 800 5000

ChildLine - 0800 1111 (24 hours)

*We're here to help you*  
[safeguarding@grimsby.ac.uk](mailto:safeguarding@grimsby.ac.uk)  
07920 860241